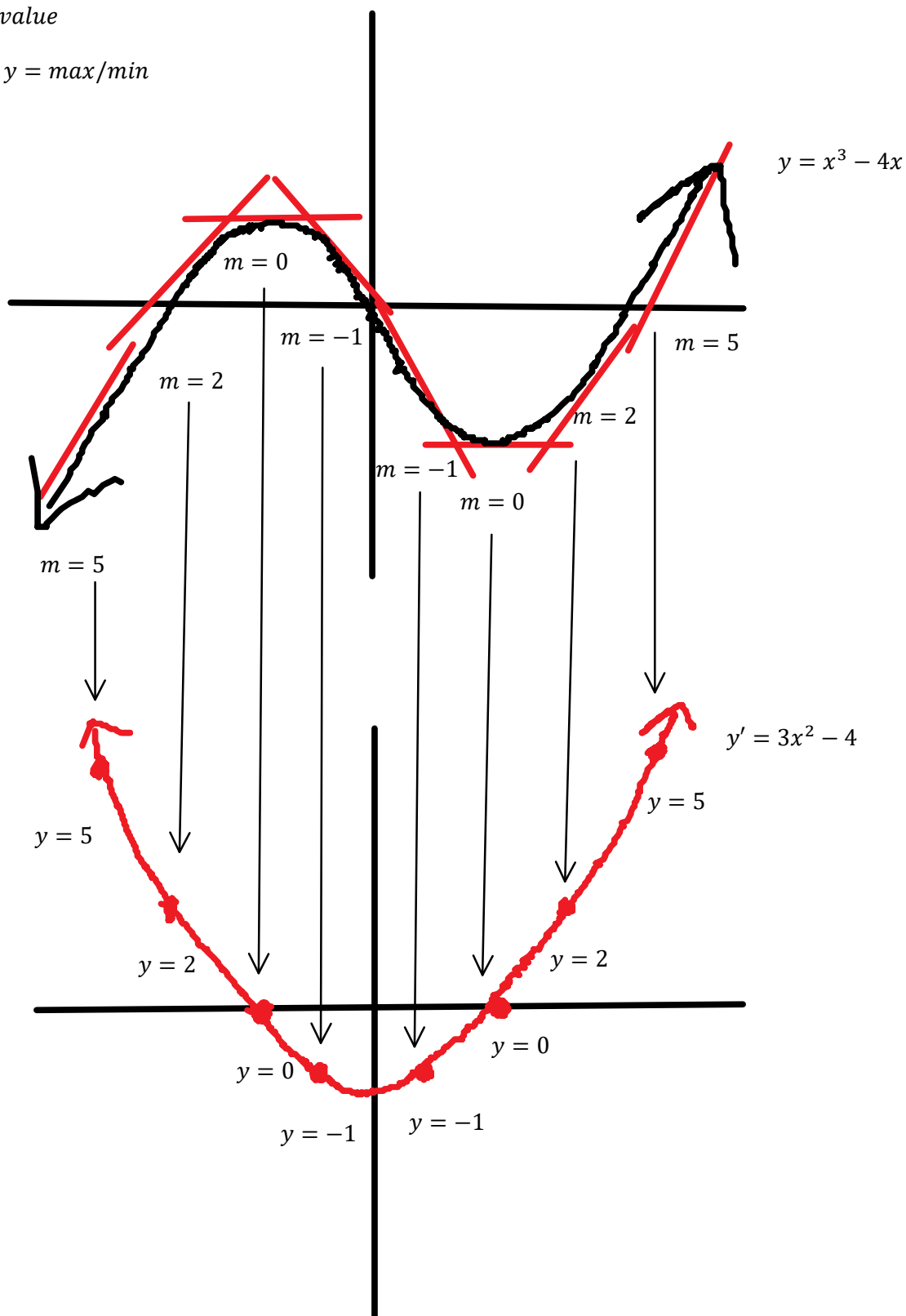


# C12 - 6.0 - Graphing Derivatives of Functions Notes

Pick an x-value to talk about, we are not done talking about that x-value until we're done talking about that x-value.

$y \text{ slope} = y' \text{ value}$

$y' = 0$  where  $y = \text{max/min}$



# C12 - 6.0 - Graphing Functions of Derivative Notes

Pick an x-value to talk about, we are not done talking about that x-value until we're done talking about that x-value.

$y'$  value =  $y$  slope

$y = \text{max/min where } y' = 0$

